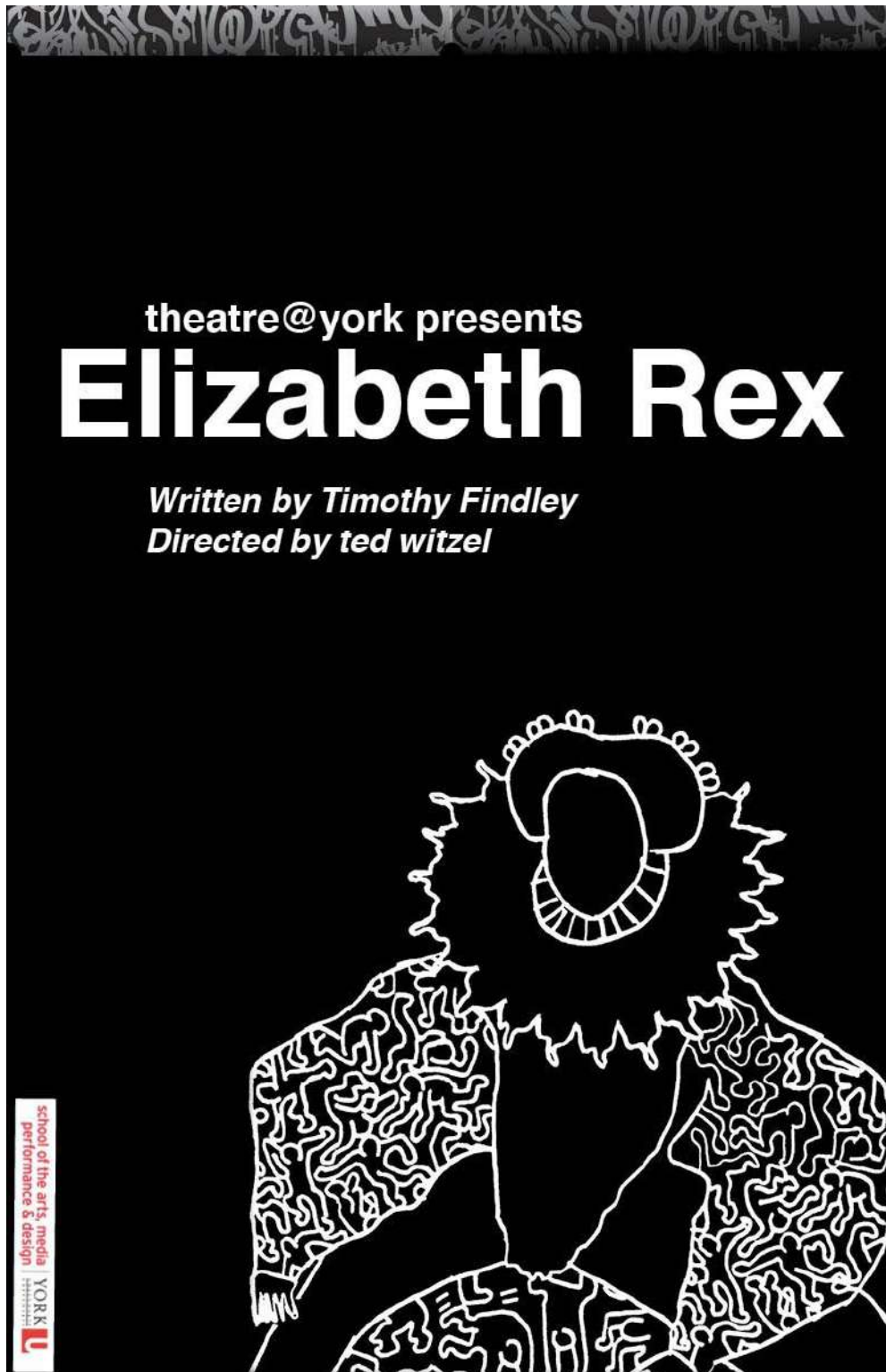


Visual Story

Elizabeth Rex



Relaxed Performance

March 19th, 2020 @ 7:30

This document will help you understand some of our play, *Elizabeth Rex*

Theatre @ York 2020

Questions? Ask The Accessibility Manager at accessibilitymanageryorku@gmail.com

Table of Contents

What to Expect at the Show.....	3
About the Story.....	4
What You're Allowed to Do.....	5
Startling Content.....	6
The Actors.....	7
The Characters and Costumes	8
People involved in the show.....	10
Glossary.....	10

What is a Relaxed Performance?

A Relaxed performance is intended specifically to be sensitive to and accepting of audience members who may benefit from a more relaxed environment. The performance is designed to reduce anxiety and provide a safe, enjoyable experience, taking into account variable sensory, communication or learning needs and abilities. This means that there is a more casual-than-usual approach to front-of-house etiquette and we ask audience members to be aware of people's needs to move or make involuntary noise.

Tickets and Venue

You can print off your tickets at home when you order them or you can pick up your tickets at the Box Office beside the entrance to the theatre. The Box Office is open from 5 p.m. to 8 p.m on Thursday. There are 360 seats in the theatre. There are stairs to get up on the higher seats with railings and a balcony. Always be careful when going up to the balcony. The doors will remain open at all times.

Box Office tel: 416.736.5888

Buy Your tickets at: https://secure1.tixhub.com/yorku/online/b_otix.asp

Important Times

The show is approximately **2** hours with no intermission. There will be a Pre-Show talk and introduction of some characters. This talk will introduce any startles that may occur and go over some information about the theatre.

The Chill Zone

There will be a curtained off area outside of the theatre in the lobby that is available as a quiet place to rest. This Chill Zone is a place where you can catch your breath and relax before returning back into the theatre. You are free to use it anytime you want.

The Land Acknowledgement

A land acknowledgement is an opening recognition about the land that we are gathered on. This land that we are on has an important history, present and future that we need to understand and acknowledge. We want to recognize that we all have a responsibility to care for this land and for those who live here.

About the Show

Director ted witzel's production is set in the 1980s. It follows the Lord Chamberlain's Men, a troupe best known for performing women's roles. After their performance of Shakespeare's *Much Ado About Nothing*, they are confronted by Queen Elizabeth I of England herself. Both Queen Elizabeth and Ned Lowenscraft, the protagonist, confide in each other about performing gender. Ned confides in consistently portraying women in order to keep his succession, while Queen Elizabeth reveals how she has to act like a man in order to govern well.

ted witzel is a Toronto and Berlin- based theatre maker. He is the co-founder and artistic director of the *red light district*, an independent Toronto-based theatre company. ted is also currently the artistic associate for the Stratford Festival Lab. He is the artist-in-residence at Buddies in Bad Times Theatre, Harbourfront Centre, and Institut für Alles Mögliche.

Elizabeth Rex is performed by the fourth- year acting conservatory students. Assistant directed by Celeste LaCroix and Amy Kingston; Set design by Hannah Stevens; Costume design by Ellie Koffman; Lighting design by Ella Theisinger; Sound design by Julia Carrano; Media design by Emily Hughes.

The Department of Theatre at York University is one of the largest and most in-depth theatre programs in Canada. It includes combined academic studies and rigorous practical training in all aspects of theatre. The Department of Theatre is part of the School of Art, Media, Performance, and Design at York University. The Department's goal is to help students define what creativity means today and how it will be imagined tomorrow. Learning by doing is the main goal of their programs. They are committed to experimentation and leadership.

For this Relaxed Performance, you are allowed to:

- Attend the show **scent-free**, leaving all perfumes at home



- Clap at the end of the show



- Eat in the seats and be aware of other's allergies



- Play on your phone and keep the volume off.



- Get up, move around, and leave your seat to sit in the lounge or go to the washroom anytime.



- To bring service or trained support animals



- Cover your ears or eyes if it gets too loud or too bright



Seats will be assigned by number and letter. If you have trouble finding your seats you can ask an usher to guide you.

Startling Content

- There will be flashing lights and louder sounds. The brightness of the lights and intensity of the sounds have been reduced to be more comfortable.



- The setting of this story takes place during the AIDs Crisis of the 80's so there are mentions and depiction of illness and other sensitive materials.



- There will be multiple sword fights with fake swords. The actors are completely safe while performing the fights. Fake blood will be used as well. All violent acts are staged and everyone included is safe and comfortable with performing them to tell the story.



- There will be a person in a bear costume on stage for some parts. There will also be a fake severed head.



- Some characters will yell, argue, scream, and might say some rude things to each other. This is a part of the script and the actors are not hurting each other.

You are always welcome to cover your ears or eyes when you feel uncomfortable. You may leave at any time.



Actors in Everyday Clothes

These are the Actors from the play without their costumes
When Actors wear their costumes and are onstage they become **characters**.



Cassandra Henry



Kat Khan



Anoja Vignesweran



Giulia Pittiglio



Madison Baines



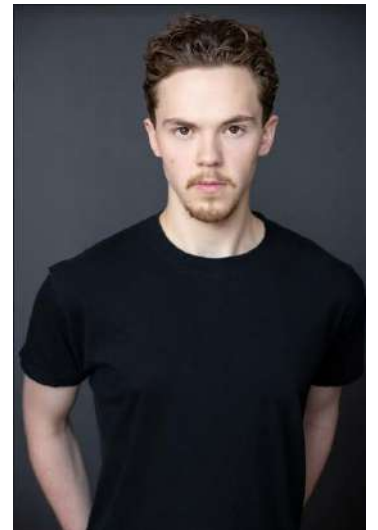
Justine Harper



Reid Millar



Michael Charles McNeil



Quinn Finnigan



Lilli Furfaro



Katia St.Jean



Sankruti Marathe



Davinder Malhi



Emily Herridge



Christa Marie Waugh

Characters and Costumes



These are some of the costumes you will see on stage.



This is the Bear Costume and the character inside of it. They will take it off onstage. The bear costume is made of fake fur and the actor is comfortable and safe wearing it.

People Involved



Emily

She is the Front of House Manager. Feel free to ask her questions

Glossary

Balcony: the upper area of seats in the theatre. **Only accessible by stairs.**

Chill Zone: an area of the lobby where you can sit and relax at any time during the show.

Intermission: a 20-minute pause half way through the show

Lobby: the entrance area before you enter the theatre where the Chill Zone is located

Prop: objects that are used in the play to help show the setting (for example, a chair or a notebook or a table)

Orchestra: the lower area of seats in the theatre

Row: Row letters are located on the side of each row of seats.

Seat: Seat numbers are located on the armrest.

Set: a setting for the scene of a play

Usher: a person who is there to help you find your seat in the theatre and answer any of your questions.

Will call: When you choose “will call” for your tickets, that means you can pick them up at the box office window before entering the theatre